

ISSUE 02/03 | JUNE

An Event Of:

**KLAF2024**  
KUALA LUMPUR ARCHITECTURE FESTIVAL

# **ARCHIDEX**®

THE 23RD INTERNATIONAL ARCHITECTURE, INTERIOR  
DESIGN & BUILDING EXHIBITION 2024, MALAYSIA

## eSHOW PREVIEW



## ASIA'S LEADING ARCHITECTURE BUSINESS EVENT

Concurrent Event:



**ACMROCH**  
ASEAN-CHINA MINISTERIAL ROUNDTABLE ON CONSTRUCTION  
AND HOUSING 2024

Concurrent Conferences:

**DATUM:KL**  
**DATUM+PLUS**  
**DATUM:GREEN**

**3 > 6**

**JULY 2024**  
**10AM - 7PM**

**KLCC**

KL CONVENTION  
CENTRE, MALAYSIA



[www.ARCHIDEX.com.my](http://www.ARCHIDEX.com.my)

# The Future of Architecture

The future of architecture is not a distant dream;  
it's happening now at ARCHIDEX.

**Experience** a vibrant hub where cutting-edge technologies, innovative materials, and groundbreaking methodologies collide.

**Witness** the evolution of building design, from smart, sustainable structures to the collaborative spirit that fuels the industry.



# Architecture is Now

**Be inspired** by the latest trends, best practices, and emerging technologies in architecture, engineering, and urban planning.

**Join us** at ARCHIDEX and be part of the movement that is shaping a stronger, more sustainable Malaysia.



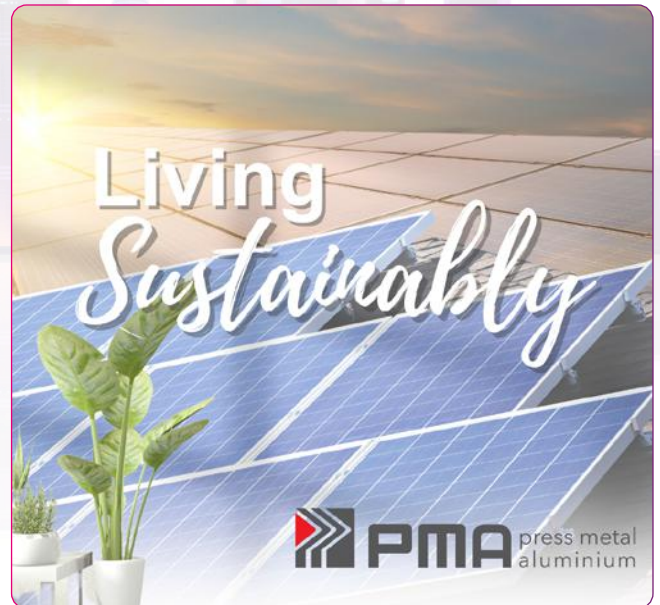


## The Buloh Story

### A Tribute to Nature and Culture Through Sustainable Bamboo Architecture

A whisper of the past, echoes in the present with BULOH - a meticulously crafted installation gracing the ARCHIDEX Star Award Gallery. "Buloh" is the Malay word for BAMBOO. Woven entirely from bamboo, this sustainable stalwart serves as a vibrant ode to tradition and the enduring embrace of the natural world. The multifaceted essence of bamboo in all its naturalness, resonates with the empowering circularity that binds our social fabric, culture, local economies, and the time-honoured wisdom of vernacular technologies.

# Leading Sustainable Aluminium Solutions for Endless Possibilities



Established in 1986 under Press Metal Aluminium Holdings Berhad (PMAH), PMB Aluminium Sdn. Bhd. (PMBA) has emerged as a leading entity in the aluminium industry. PMBA's dedication to excellence is reflected in its comprehensive production chain, spanning from remelting to extrusion profile.

**With a focus on delivering sustainable solutions that redefine industry standards, PMBA prioritises uncompromised quality, innovation, and environmental stewardship.**



PMBA holds certifications such as ISO9001, ISO14001 & 45001 management system, and compliance with industry-specific standards.

Its High Performance Architectural System series, including COMSASH™ SC35i, C39i, and COMDOOR2™, is certified by SIRIM under MS832, MS1017, and MS2289.

Continuously exploring aluminium solutions that seamlessly integrate sustainability, performance, and aesthetics, PMBA strives to establish new benchmark of excellence within the industry leveraging aluminium's infinite recyclability, and delivering sustainable materials to our partners.

# ‘The Best Made in Taiwan’: Taiwan Excellence Pavilion features hottest green innovations from award- winning brands.

**YZTEK CO. LTD.**

Booth No.: 2L180

Hall: 2

## Never Worry About Leaving the Stove On Again – Discover e+Autoff!

With YZTEK’s revolutionary home safety appliance, e+Autoff, you never have to worry if you’ve left the stove on. Plus, it installs easily on any gas stove and automatically switches it off at a pre-set time. Don’t wait—stay safe with e+Autoff today!

- 42 international invention patents
- Award-winning innovation
- Unparallel safety



**WATERSON CORP**

Booth No.: 2L180

Hall: 2

## Say Goodbye to Heavy Doors with Waterson’s Award- Winning Hinges

Waterson’s award-winning door hinges are the secret weapon for effortless access, especially for the elderly, kids, or anyone with limited mobility. UL-listed and ADA-approved, they require less than 5 lbs of force to open. No more loud slams or clunky closures. Waterson hinges keep things smooth and quiet. Ditch the door struggles for good. Visit our website [watersonusa.com](http://watersonusa.com) to learn more.



**TAROKO DOOR & WINDOW TECHNOLOGIES, INC**

Booth No.: 2L180 Hall: 2

**Forget Bulky Screens! Taroko's Sleek HISS System Takes Window Tech to the Next Level**

Taroko's blowing up ARCHIDEX with next-level window tech! Introducing innovative pleated and roller retractable screens combined with cutting-edge aluminium door and window technologies for safety and comfort. Get perfect airflow with HISS Dock-able Roller Screen System with a patented Tension-Adjust design and enjoy space-saving magic with 4.0G Barrier-Free Pleated Screen that stores away discreetly when not in use. It's time to upgrade your windows.


**FERRO-CARBON ENT. CO. LTD.**

Booth No.: 2L180 Hall: 2

**Transform Your Home with FECA's Powerful and Versatile Suction Cups**

FERRO-CARBON's blowing up the homeware scene with revolutionary suction tech. Setting the industry's gold standards with ISO-certified products that excel in temperature resistance [-10°C to 70°C] and suction power on rough surfaces [<0.4mm], they have transformed industrial suction cups into innovative homeware solutions like the Earl Toothbrush Holder and Diana Laundry Net Set. Marketed under its FECA brand, these are not-to-be-missed revolutionary items at ARCHIDEX.



### Sustainable & Sleek: Saint-Gobain's Olympic Inspiration Takes Over ARCHIDEX

Come enjoy Saint-Gobain's Olympic-themed innovation at ARCHIDEX 2024! Experience six themed rooms inspired by the Olympic spirit, showcasing cutting-edge solutions from Saint-Gobain - Gyproc, Weber, Prima, Tekbond, Ecophon, Isover, and Duraflex, to elevate your projects with a one-stop approach.

Step into Hall 5 and explore cutting-edge technology like acoustic panels, construction chemicals, gypsum plasterboards, fiber cement boards, insulation, sealants, and bonding. Discover their digital interactive wall and commitment to carbon neutrality by 2050. Elevate your projects and be part of a greener future with Saint-Gobain!



### GERE's Vision for Unrivaled Security

Security's getting a major upgrade, and GERE's leading the charge! Beyond security, GERE is all about RELIABILITY. Pioneering cutting-edge designs and innovative materials, it isn't just about keeping your stuff safe, GERE wants to be your lifelong guardian of safety and security. Imagine peace of mind on a whole new level! The future of security is moving fast. Don't get left behind with outdated protection. GERE's innovations are here at ARCHIDEX so stay safe with their top-notch security equipment.





### Eco-conscious Elegance: Discover the Versatility of Natural Stones in Modern Design

Experience the allure of natural stones that captivate architects, designers, and homeowners! Discover the world of marble, quartzite, quartz, and many more. The Quartzite, known for durability and aesthetics, is perfect as dimension stones for countertops, facades, and flooring. It adds a mesmerising beauty of the colour of the sunset. The Keraflex Maxi S1 Zero, large format porcelain tiles, offer seamless installation and design freedom. This eco-conscious product is part of Mapei's CO2 Fully Offset in the Entire Life Cycle product line. Elevate your space with the timeless elegance of sustainably produced natural stones.



### Discover Maica: Where Freedom Meets Positivity in Interior Design

Maica's versatile collection redefines spaces with a focus on freedom, positivity, and inclusivity. Aligned with European Standard EN438, their products offer durability and sustainability. Certified by Singapore Green Label, GreenGuard, and GreenGuard Gold, Maica's eco-friendly practices create collaborative and user-friendly environments. Embracing diversity through accessible features and culturally representative artwork, Maica nurtures belonging and respect, empowering individuals within a supportive community. Don't miss out on experiencing the transformative power of Maica's culture of freedom and positive atmosphere!



### LIFE. LOVE. HOME.: Unleashing Excellence with GROHE and American Standard

Discover the vibrant range of GROHE and American Standard colour fittings, alongside an array of innovative bathroom solutions.

GROHE, a global leader in bathroom solutions and kitchen fittings, has been part of the esteemed LIXIL brand since 2014. Rooted in quality, technology, design, and sustainability, GROHE products offer intelligent solutions with German precision.

With a 150-year legacy, American Standard specialises in crafting bathrooms and kitchens that enhance everyday living. Our focus on innovation and simplicity ensures products fit seamlessly into your home, creating timeless design and lasting durability.



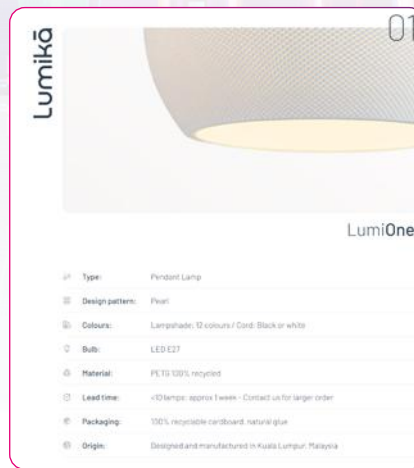
### Transform your Space: Discover the Versatility of Solar Stone Tiles

Introducing the Solar Stone porcelain tiles from Eagle Ceramic – a game-changer in architectural design! With three distinct surfaces – Matt, Polished, and Rough – this innovative series offers unparalleled sophistication and versatility. Exuding elegance and superior quality, these tiles meet the challenges of modern architectural projects, creating contemporary, rustic or sleek designs, while meeting practical concerns such as durability and slip-resistance. Don't miss out on this blend of innovation and sustainability – transform your designs with Solar Stone today!



### Illuminate Sustainably: Discover Lumika's Recycled PETG Lamp Shades

Explore Lumika's revolutionary lamp shades, made entirely from recycled PETG! Chosen for its natural translucency and UV resistance, PETG makes these lamp shades perfect for both indoor and outdoor use. Lumika's commitment to low carbon impact drives them to use 3D printing for production, ensuring quick turnarounds and unparalleled flexibility. Say goodbye to moulding constraints and high MOQs – these recycled lamps are custom-tailored to your exact needs. With 100% recycled materials, local manufacturing, and a values-driven supplier ecosystem, Lumika is lighting the way to a sustainable future.



### Meet Rumah Comel 3.0: The Future of Modular Living

Solid Horizon presents a cute addition to ARCHIDEX, the Rumah Comel 3.0. This modular home is mobile, faster, greener, and smarter! Its new release, Smart Comel, embodies advanced technology and efficient design, with a focus on Smart Home integration and Smart Layout. These homes address small area requirements and reduce waste by over 30%. They're highly mobile, durable for over 50 years, and entirely recyclable. Beyond a home, Rumah Comel 3.0 is a revolution in sustainable living. Don't miss out on transforming your space with this groundbreaking architectural marvel!



### BegerShield Griptech 2IN1 is the Eco-Conscious Metal Makeover

Discover BegerShield Griptech 2IN1, a revolutionary metal coating with an anti-rust primer and topcoat. Made with premium acrylic resin, it dries in 10 minutes, covers 60 sqm/gallon and has low odour. It's perfect for a variety of surfaces including PVC/ABS plastic, tile, wood, steel, and metal sheets. The Beger Group pioneers eco-wellness, reducing carbon footprints and implementing sustainable practices in its operations.



### Luxury Meets Efficiency: NvenerHPL, the Sustainable Future of Designs

Architects can unleash their creativity with NvenerHPL, a revolutionary force in future architecture, blending exquisite wood textures with advanced PUR glue application for effortless installation. Its durability ensures long-lasting quality, while its adaptability aligns perfectly with innovative architectural concepts, letting you build anything you can imagine! NvenerHPL is also all about eco-friendliness promoting low carbon footprint and zero formaldehyde – it's got the planet and your well-being in mind.





# Explore Space, Time, and Meaning in Architecture

DATUM, a three-day conference at ARCHIDEX, delves into the human aspect of architecture, inspiring purpose, and relevance in every design.

12 CPD

## DATUM:KL 5 - 6 JULY | 9.00AM - 5.30PM Plenary Hall, Level 1

### Speakers



Kong Jian Yu (China)



Rasem Badran (Jordan)



John K.S. Lau (Malaysia)



Chen Xi (China)



Prasanna Morey (India)



Kun Lim & Kun San (USA/Malaysia)



Bayejid M. Khondoker (Bangladesh)



Jo Nagasaka (Japan)



Praveen Bavadekar (India)



Jim Caumeron (Philippines)

## DATUM+PLUS

4 CPD

4 JULY | 2.00PM - 6.00PM  
Plenary Theatre, Level 3

### Speakers



Rearich Sjarief (Indonesia)



Ho Chin Keng (Malaysia)



Shin Tseng (Malaysia)



Fadzlan Rizan Johari (Malaysia)

## DATUM:GREEN

4 CPD

4 JULY | 9.00AM - 1.00PM  
Plenary Theatre, Level 3

### Speakers



Chatpong Chuenrudeemol (Thailand)



Lucas Loo (Malaysia)



Azman Zainal (Malaysia)



Mior Aizuddin (Malaysia)

CORPORATE PARTNER



INDUSTRY PARTNERS



ORGANISED BY



Visit [www.klaf.my](http://www.klaf.my)  
for registration & ticketing

## ARCHIDEX'S FORUMS AND BIZ TALK:

# Industry Insights You Can't Afford to Miss!!!

Fuel your design thinking and push the boundaries of your architectural imagination at ARCHIDEX's **Focus Forum, Biz Talk and The Forum @ PAM Pavilion**. We've curated a stellar lineup of guest speakers ready to **inspire, educate, and ignite** your passion for architecture.

### The Forum @ PAM Pavilion, Hall 8

Spark new ideas, be inspired and engage with industry leaders discussing the hottest topics shaping the future of architecture that revolves around:

- AI & Tech
- Social Architecture
- Materiality
- Adaptive Architecture

And many more.

### ARCHIDEX Focus Forum @ Lounge 1, Hall 1

Connect with like-minded professionals, gain practical takeaways and cutting edge trends to elevate your design practice and capabilities.

- Glimpse at the highlights of ARCHIDEX @ UIA
- MASA Focus Forum: Material & Mind
- ICOMOS Malaysia Focus Forum: Celebrate Heritage

And many more.

### ARCHIDEX Biz Talk @ Kiosk 2, Hall 2

Uncover groundbreaking materials for industry efficiency and learn the hottest trends shaping the future of architecture from the expert lineup including:

1. Homa Sdn Bhd
2. Jurusanwa Enterprise Sdn Bhd
3. Sylvania
4. UAC Berhad
5. Quini Global Pty Ltd
6. Saint-Gobain Malaysia Sdn Bhd
7. Seamaster (Marketing) Sdn Bhd
8. Milpro Consultancy Sdn Bhd

And many more.



Be sure to **register** as an ARCHIDEX visitor to attend these forums and talks.

### Collect your CPD Points.

Get a verified sticker for your CPD Point submission from the CPD Points Counter.

EXCLUSIVE ACCESS: PRODUCT LAUNCH & SHOWCASE

# Witness Exclusive Special Events and Cutting-Edge Innovations at ARCHIDEX 2024

At ARCHIDEX 2024, you'll have the unique opportunity to witness the launch of groundbreaking products and technologies shaping the future of architecture and design. Engage with industry leaders and innovators as they present their latest creations, offering you a first look at the advancements that will redefine the built environment.

## PRODUCT LAUNCH

POLARSTONE (M) SDN BHD

Booth No. 4G467

Hall: 4



### SGS Certified & Malaysian Made: Exclusive Launch of Malaysia's Unique Quartz Stone

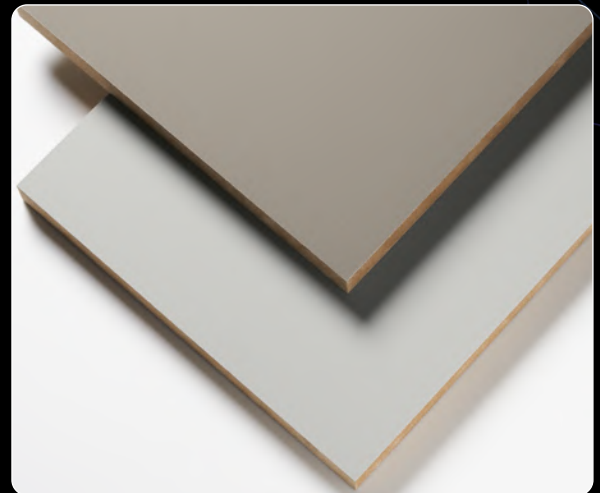
Be a part of the exclusive launch of **Malaysian-made Quartz Stone** at ARCHIDEX! We're unveiling some seriously **UNIQUE COLORS** that'll blow your design mind. After 6 years of R&D, Polarstone unveils these unique colours designed for developers, interior designers, and contractors, SGS certified for quality you can trust. Get ready to take your projects to the next level.

## PRODUCT SHOWCASE

PANEL PLUS PRODUCTS (M) SDN BHD

Booth No. 10K255

Hall: 10



### Experience Perfection & Luxury: Unveiling Perfect Wood & Perfect Silk

Introducing the "Perfect Series": Perfect Wood and Perfect Silk! Perfect Wood dazzles with its **stunning woodgrain**, mimicking real veneer wood with unmatched texture and depth. Perfect Silk shines with an ultra-matte finish and **anti-fingerprint** magic, offering a truly luxurious touch.

See and feel the difference between Perfect Wood and Perfect Silk, get expert guidance on usage, and discover the perfect colours for your projects. Come talk to us, and experience the future of design!

# GETTING HERE

## PUBLIC TRANSPORT

ARCHIDEX is conveniently located at the Kuala Lumpur Convention Centre near the iconic Petronas Twin Towers, making it easily accessible by various modes of transportation.

## Fly In with MAS

- Book now until July 2nd to snag this amazing deal.
- Travel anytime between June 27th and July 13th.
- **15% OFF**
- Promo Code: **MHARCHIDEX15**

## Nearby HOTELS

Discover the best accommodation options near ARCHIDEX, ranging from luxurious hotels to cozy short-term stays.

## Flash your

## ARCHIDEX Visitor or Exhibitor TAG

to enjoy special privileges from 2-13 July, 2024

38 Restaurant Offers for Networking & Dining During ARCHIDEX

SCAN THE QR CODE TO FIND OUT MORE



SCAN TO SEE YOUR OPTIONS





ARCHIDEX® Presents

# ARCHITALENT

6TH ARCHITECTURE STUDENTS  
DESIGN COMPETITION, MALAYSIA

ARCHITALENT Finalists' Presentation

Scout the Next Gen of  
**ARCHITECTURAL  
TALENT**

THEME  
**THE  
NEXUS**



It's happening at **PAM Pavilion, Hall 8** on the **6th July, 2024**. Mark your calendars and join us for the ARCHITALENT presentations at ARCHIDEX!

The Countdown to **ARCHIDEX 2024** Continues...

## Get Ready for Issue 3!!

Your comprehensive guide to make the most of your ARCHIDEX experience.

- **Exclusive sneak peek** into ARCHIDEX programme schedules
- **Insider access** to the most talked-about Asian Young Architect Programme
- **Get a glimpse** of what's hot at PAM Pavilion

**YOUR  
ESSENTIAL  
SHOW  
GUIDE**





Scan Here to  
**Pre-Register** Your Visit  
**ARCHIDEX**<sup>®</sup>

In Collaboration With:



Endorsed By:



Jointly Organised By:



**EXHIBITION DATE**

**TIME**

3 & 4 JULY 2024, WEDNESDAY & THURSDAY

10AM - 7PM - TRADE DAYS

5 & 6 JULY 2024, FRIDAY & SATURDAY

10AM - 7PM - TRADE, PUBLIC & STUDENT DAYS

**THIS TRADE EXHIBITION IS OPEN TO PERSONS ABOVE 16 YEARS OLD & UPON REGISTRATION ONLY.** Visitors must be in proper business attire and the Organisers reserve the rights to refuse entry to any person/s at their discretion. CPD Point(s) are applicable for LAM registered members attending the exhibition.